

# SAGE DIGITAL ENDEC 3644 TASK SHEET

## Incoming Filters:

Tell your ENDEC how it should handle incoming alerts.

### Select Filter

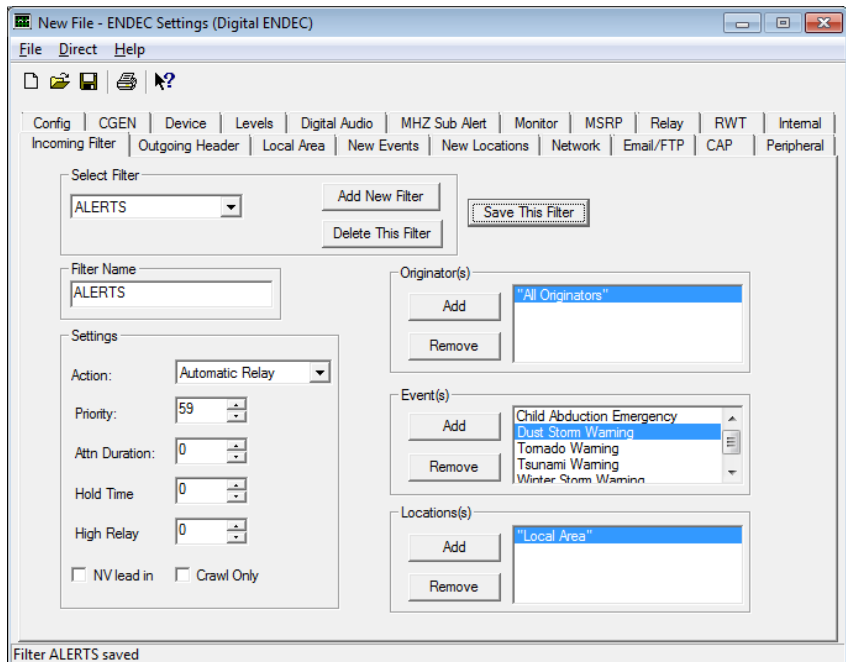
Click the Add New Filter button. In the dialog that appears, enter a name for this filter, then click the OK button.

### Originators

Click the Add button in the Originators box. Choose an originator type from the dialog that appears and click OK to add it to the list, repeating the process as many times as desired to add additional originator types. Choosing All Originators tells the ENDEC that you don't care who sent this alert, while choosing one or more originators tells the ENDEC that you only care if this alert was issued by a particular source.

### Events

Click the Add button in the Events box. Select the desired event from the dialog that appears, and click OK to add it to the list, repeating as many times as desired. With the exception of the OTHERS filter, you will not want to choose All Events.



Note: While it makes sense to put logical groups of related events in a single filter, bear in mind that each event you add to the list will be seen by the ENDEC as having equal priority; this is important when an alert is received while another is pending: if the newly-arrived alert has a priority equal to or greater than the pending alert, the newly-arrived alert takes over, and the previously pending alert is discarded.

For example, a WXWARN filter with Tornado Warning and Flood Warning included would allow a Flood Warning to take the place of a Tornado Warning, if the Flood Warning arrived while the Tornado Warning was pending – and that's probably not the desired behavior! To avoid this kind of clash, group your events into a manageable number of intuitively-named filters, and prioritize them using the Priority setting, described below.

### Locations

Click the Add button in the Locations box. Check the Local Area checkbox in the dialog that appears, and click the OK button. The Locations list will show one entry, "Local Area". When the ENDEC sees this location entry, it substitutes in the list of counties you assigned in the Local Area tab. This saves you time and eliminates data entry errors, especially if you have a large service area.

Any alert targeting a list of counties that includes one or more of the counties in your Local Area will be considered a match. This is also true for any alert targeting "All of State" for a state that contains one or more of your counties. If you straddle a state line, keep this in mind.

### Action

From the Action list, choose what you want the ENDEC to do when an alert matches this filter. This setting determines whether the alert gets played, delayed, or merely logged. Choose Automatic Relay if the ENDEC should immediately broadcast alerts that match this filter. Choose Timed Relay if you want to allow your operator a brief window of time to get out of programming - commercials, song, etc. - before the alert is broadcast. For more info about these and other actions, see below.

# SAGE DIGITAL ENDEC 3644 TASK SHEET

---

## Priority

Choose a number between your lowest and highest in-use priority value (usually 40, for `OTHERS`, and 63, for `EAN`). This number determines the order in which the ENDEC will compare each filter to the incoming alert until it finds one that matches. The first filter that matches the Originator, Event and Location of the alert becomes authoritative, and no further matching is attempted. If you assign multiple events to a single filter, be sure it makes real-world sense to treat those events as equal in importance.

## Attn Duration

This value specifies the number of seconds of attention tone – the two-tone `BEEEEEP` - added to the beginning of alert audio. Its purpose is to get the attention of human ears, and has nothing to do with the `BRRRAP BRRRAP BRRRAP` sounds that signify the beginning and end of an alert. Consult company guidelines and official rules for the right value for a given kind of alert.

## Hold Time

With an action of `Timed Relay` or `Timed Ignore`, this value specifies the number of minutes your operator (or automation system) will have to notice the pending alert and take action. When an alert is received, the ENDEC begins a countdown from this value. Within this countdown period, you may choose to playback the alert or kill it, as desired. If the countdown is allowed to reach zero, the ENDEC takes action automatically, replacing your program audio with the alert for `Timed Relay`, or simply writing the alert to the log and doing nothing for `Timed Ignore`.

## NV Lead In

If checked, the ENDEC will playback the audio in the NV Audio store prior to the opening `BRRRAP`s of the alert. Generally, this would be the boilerplate "The following is a test..." bumper and only used for monthly tests.

## Crawl Only

Useful primarily for TV stations, if this option is checked, the ENDEC will send the text of the alert out its serial ports but will not play back the alert audio or data tones. For any audio-only medium, this option should generally not be enabled.

## Save This Filter

When you have finished setting these required parameters, click the Save This Filter button.

## Important!

- Do not add any locations to the `OTHERS` filter - leave its Locations field empty.
- The `Crawl Only` checkbox is used only in limited cases. Do not check this box.

## Set EAN filter to Automatic Relay.

From the Select Filter list, choose `EAN`. If it is not set to `Automatic Relay` on the Action list, change it, then click the Save This Filter button.

# SAGE DIGITAL ENDEC 3644 TASK SHEET

---

## GOVMUSTCARRY:

The FCC has deleted the Governor Must Carry rules from Part 11. If you have a filter named GOVMUSTCARRY, it will be ignored. You can delete the GOVMUSTCARRY if you had previously built one.

## More About Actions

### Automatic Relay

Begin broadcast of the alert immediately, without manual intervention from the operator.

### Timed Relay

Give the operator a short window of time in which he can manually trigger alert playback. If the operator has not intervened within that time period, broadcast of the alert will commence without intervention.

### Timed Ignore

As with timed relay, the operator is given a countdown during which he can choose to broadcast the alert. If the countdown reaches zero and the operator has not intervened, the alert will not be broadcast.

### Log Only

The alert is not broadcast; an entry is written to the log, and no other action is taken.